



9001:2015

ISO Certified Company

Indus[®]
TANKS & PIPES

Water Storage Solutions

Water Storage Tanks

Plumbing & Sanitary Systems

CPVC Pipes & Fittings

UPVC Pipes & Fittings

SWR Pipes & Fittings

Household & Utility Products

Unbreakable Plastic Bucket

Unbreakable Plastic Sup

Ghamela / Tagari

Agriculture & Irrigation Solutions

Agriculture Pipes & Fittings

HDPE Pipes

Sprinkler Pipes

Casing Pipes

Garden Pipes

Braided Pipes

इंडस का वादा
मजबूती सबसे ज्यादा



Price List
2026-27

www.industanks.com



PVC Pipes 6 Mtrs. (ISI)

Size (mm)	Qty/Box	MRP 2.5 kg	MRP 4 kg	MRP 4 kg	MRP 10 kg
1/2"	20				244
3/4"	25				384
1"	32				644
1 1/4"	40	440		634	1080
1 1/2"	50	596		920	1400
2"	63	776	1012	1474	2289
2.5"	75	1086	1406	2016	3220
3"	90	1358	2016	2854	4617
4"	110	1978	2926	4220	6868
5"	140	3104	4810	6984	
6"	160	4074	6362	9118	
7"	180	5160	7954	11640	
8"	200	6362	10048	14588	

Reducer Coupler

Size (mm)	Qty/Box	MRP
75 x 63	150	52.00
110 x 63	60	98.67
110 x 75	50	105.27
110 x 90	50	113.85



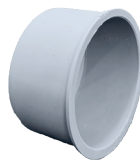
Elbow

Size (mm)	Qty/Box	MRP
40	400	19.30
50	250	31.40
63	120	39.10
75	80	46.70
90	65	73.50
110	30	116.00
140	14	293.00
160	11	298.00



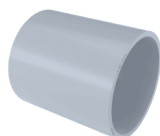
End Cap PN 4

Size (mm)	Qty/Box	MRP
40	350	12.63
50	300	15.78
63	250	27.06
75	200	41.39
90	120	49.35
110	80	75.35



Coupler PN 4

Size (mm)	Qty/Box	MRP
63	180	27.56
75	110	39.66
90	60	60.50
110	40	97.50



Tee Heavy PN 6 (ISI)

Size (mm)	Qty/Box	MRP
63	60	90.53
75	50	136.29
90	36	209.60
110	18	313.28



Elbow Heavy PN 6 (ISI)

Size (mm)	Qty/Box	MRP
63	60	90.53
75	50	136.29
90	36	209.60
110	18	313.28



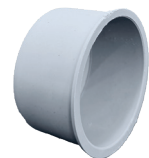
Tee

Size (mm)	Qty/Box	MRP
40	300	24.75
50	150	35.75
63	80	47.30
75	50	62.75
90	40	89.82
110	15	165.44
140	10	386.54
160	8	374.00



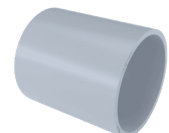
End Cap (ISI)

Size (mm)	Qty/Box	MRP
40	350	12.63
50	300	15.78
63	250	20.57
75	200	28.93
90	120	46.53
110	80	65.45



Coupler PN 6 (ISI)

Size (mm)	Qty/Box	MRP
40		14.86
50		26.53
63	180	38.20
75	110	58.37
90	60	92.86
110	40	159.18





SWR Pipes 3 Mtrs.

Size	mm	MRP 2.5 kg	MRP A Type	MRP B Type
2.5"	75	570	728	1344
3"	90	700	1020	1660
4"	110	998	1288	1996
6"	160	1970	2848	3490

SWR Double Socket PN 4

Size (ft.)	75 mm	110 mm
10	780	1390
6	530	910
4	380	640
3	300	490
2	210	360

Reducer Tee

Size (mm)	Qty/Box	MRP
110 x 75	21	193.00



Reducer Coupler

Size (mm)	Qty/Box	MRP
110 x 75	00	104.50



Coupler

Size (mm)	Qty/Box	MRP
75 mm	60	79.42
110 mm	26	139.70



Plain Bend 87°5 (ISI)

Size (mm)	Qty/Box	MRP
75 mm	84	116.99
110 mm	30	235.29



Plain Tee (ISI)

Size (mm)	Qty/Box	MRP
75 mm	60	168.65
110 mm	20	328.19



Tee with Door Cap (ISI)

Size (mm)	Qty/Box	MRP
75 mm	34	198.92
110 mm	15	390.46



Bend with Door Cap (ISI)

Size (mm)	Qty/Box	MRP
75 mm	60	145.48
110 mm	28	287.03



Shoe Bend

Size (mm)	Qty/Box	MRP
75 mm	80	99.50
110 mm	30	171.12



Vent Cowl

Size (mm)	Qty/Box	MRP
75 mm	525	23.32
110 mm	228	38.39



Single Y with Door

Size (mm)	Qty/Box	MRP
75 mm	36	190.30
110 mm	11	333.08



Single Y

Size (mm)	Qty/Box	MRP
75 mm	40	163.35
110 mm	14	316.80





SWR Pipes 3 Mtrs.

Size (in)	mm	MRP 2.5 kg	MRP A Type	MRP B Type
2.5"	75	560	700	1310
3"	90	670	994	1630
4"	110	998	1280	1980
6"	160	1950	2820	3450

Door Y

Size (mm)	Qty/Box	MRP
75 mm	40	158.50
110 mm	12	319.50



Single Y

Size (mm)	Qty/Box	MRP
75 mm	45	161.81
110 mm	16	286.11



Reducer Tee

Size (mm)	Qty/Box	MRP
110 x 75	21	175.00



Plain Tee (ISI)

Size (mm)	Qty/Box	MRP
75 mm	60	95.75
110 mm	20	192.61



Shoe Bend

Size (mm)	Qty/Box	MRP
75 mm	91	74.85
110 mm	36	136.13



Nahni Trap (with Jali) (ISI)

Size (mm)	Qty/Box	MRP
110 x 75	30	185.57
110 x 90	45	174.94



Plain Tee with Door Cap (ISI)

Size (mm)	Qty/Box	MRP
75 mm	50	134.72
110 mm	15	238.00



SWR Pipes 6 Mtrs.

Size (in)	mm	MRP 2.5 kg	MRP A Type	MRP B Type
2.5"	75	1110	1390	2620
3"	90	1340	1988	3260
4"	110	1996	2560	3960
6"	160	3900	5640	6900

Reducer Coupler

Size (mm)	Qty/Box	MRP
110 x 75	85	97.68



Plain Bend 87°5 (ISI)

Size (mm)	Qty/Box	MRP
75 mm	84	83.61
110 mm	30	154.41



Coupler

Size (mm)	Qty/Box	MRP
75 mm	120	57.25
110 mm	45	108.24



Nahni Trap (without Jali) (ISI)

Size (mm)	Qty/Box	MRP
110 x 63	45	170.00
110 x 75	45	175.00
110 x 90	30	211.50
110 x 110	24	233.50



Plain Bend with Door Cap (ISI)

Size (mm)	Qty/Box	MRP
75 mm	62	92.46
110 mm	26	166.45





Pipes 3 Mtrs.

Size (in)	mm	MRP SDR 11	MRP SDR 13.5	QTY BUNDLE
1/2"	15	206	181	80
3/4"	20	303	254	50
1"	25	470	398	30
1 1/4"	32	665	565	20
1 1/2"	40	943	821	15
2"	50	1591		10

TEE

Size (in)	mm	Qty	MRP
3/4"	20	200	28.76
1"	25	100	44.35
1 1/4"	32	60	91.75
1 1/2"	40	35	175.56
2"	50	16	377.40



MTA

Size (in)	mm	Qty	MRP
3/4"	20	350	22.11
1"	25	250	33.60
1 1/4"	32	150	57.04
1 1/2"	40	100	75.63
2"	50	50	154.33



FTA

Size (in)	mm	Qty	MRP
3/4"	20	300	29.10
1"	25	175	43.56
1 1/4"	32	100	77.77
1 1/2"	40	70	121.22
2"	50	40	203.56



Elbow

Size (in)	mm	Qty	MRP
3/4"	20	250	17.23
1"	25	150	35.97
1 1/4"	32	90	74.91
1 1/2"	40	50	138.49
2"	50	22	308.60



Shoe Bend 45°

Size (in)	mm	Qty	MRP
3/4"	20	300	25.96
1"	25	150	45.65



Coupler

Size (in)	mm	Qty	MRP
3/4"	20	400	13.75
1"	25	200	23.43
1 1/4"	32	125	44.11
1 1/2"	40	75	83.00
2"	50	40	190.91



Tank Connector

Size (in)	mm	Qty	MRP
3/4"	20	150	59.40
1"	25	80	85.40
1 1/4"	32	60	132.00
1 1/2"	40	45	198.20
2"	50	25	318.10



Reducer

Size (in)	mm	Qty	MRP
1" x 3/4"	25 x 20	250	23.01
1 1/4" x 3/4"	32 x 20	200	26.51
1 1/4" x 1"	32 x 25	150	32.00
1 1/2" x 3/4"	40 x 20	130	46.20
1 1/2" x 1"	40 x 25	100	49.61



Union

Size (in)	mm	Qty	MRP
3/4"	20	150	94.05
1"	25	100	120.56
1 1/4"	32	70	164.18
1 1/2"	40	40	289.96
2"	50	20	538.56



Reducer Tee

Size (in)	mm	Qty	MRP
1' x 3/4"	25 x 20	125	73.60
1 1/4' x 3/4"	32 x 20	80	91.10
1 1/4" x 1"	32 x 25	75	95.10
1 1/2" x 3/4"	40 x 20	60	149.20
1 1/2" x 1"	40 x 25	55	153.15





Reducer Elbow

Size (in)	mm	Qty	MRP
1 x 3/4"	20 x 25	175	38.30



Reducer FTA Brass

Size (in)	mm	Qty	MRP
3/4" x 1/2"	20 x 15	200	80.10
1" x 1/2"	25 x 15	125	96.35



Reducer Elbow Brass

Size (in)	mm	Qty	MRP
3/4" x 1/2"	20 x 15	100	64.10
1" x 1/2"	25 x 15	75	116.20



End Cap

Size (in)	mm	Qty	MRP
3/4"	20	400	13.10
1"	25	350	20.70



End Plug (ISI)

Size (in)	mm	Qty	MRP
1/2"	15	20	13.50



MTA Brass

Size (in)	mm	Qty	MRP
1"	25	60	267.00



Brass Elbow (ISI)

Size (in)	mm	Qty	MRP
3/4"	20	75	150.03
1"	25	60	255.05



Nipple (ISI)

Size (in)	mm	Qty	MRP
3/4"	20	160	67.50
1"	25	100	97.50



Reducer MTA Brass

Size (in)	mm	Qty	MRP
3/4" x 1/2"	20 x 15	200	112.30
1" x 1/2"	25 x 15	125	128.20



Reducer TEE Brass

Size (in)	mm	Qty	MRP
3/4" x 1/2"	20 x 15	75	78.90
1" x 1/2"	25 x 15	50	120.10



FTA Brass

Size (in)	mm	Qty	MRP
1"	25	75	289.00



Concealed Valve Short Body (ISI)

Type	mm	Qty	MRP
3/4"	20	24	1297.75
1"	25	15	1505.54



Brass TEE (ISI)

Size (in)	mm	Qty	MRP
3/4"	20	75	91.37
1"	25	60	270.00



Ball Valve (ISI)

Size (in)	mm	Qty	MRP
3/4"	20	40	198.50
1"	25	25	320.00
1 1/4"	32	15	438.00
1 1/2"	40	10	834.00
2"	50	05	1467.00





ASTM Plumbing Pipes

Size (in)	mm	3 MTR			6 MTR		
		SCH 40	SCH 80	Qty	SCH 40	SCH 80	Qty
1/2"	15	304	370	50	608	740	35
3/4"	20	366	486	35	730	972	25
1"	25	568	688	25	1134	1378	15
1 1/4"	32	802	992	15	1604	1984	12
1 1/2"	40	970	1202	10	1942	2406	10
2"	50	1236	1636	8	2468	3270	6

TEE

Size (in)	mm	Qty	MRP
1/2"	15	150	21.76
3/4"	20	100	30.25
1"	25	60	50.93
1 1/4"	32	30	77.66
1 1/2"	40	24	103.51
2"	50	16	185.46



Elbow

Size (in)	mm	Qty	MRP
1/2"	15	250	15.84
3/4"	20	150	22.77
1"	25	75	35.42
1 1/4"	32	50	65.56
1 1/2"	40	30	77.99
2"	50	22	130.35



MTA

Size (in)	mm	Qty	MRP
1/2"	15		8.36
3/4"	20	250	12.10
1"	25	150	20.20
1 1/4"	32	100	33.22
1 1/2"	40	75	45.21
2"	50	40	61.50



Union

Size (in)	mm	Qty	MRP
1/2"	15	125	46.86
3/4"	20	75	67.10
1"	25	60	88.00
1 1/4"	32	40	125.62
1 1/2"	40	30	173.91
2"	50	20	202.45



FTA

Size (in)	mm	Qty	MRP
1/2"	15	300	12.32
3/4"	20	150	17.32
1"	25	125	26.95
1 1/4"	32	80	40.40
1 1/2"	40	45	49.50
2"	50	40	71.55



Tank Conector

Size (in)	mm	Qty	MRP
1/2"	15	175	39.76
3/4"	20	125	48.29
1"	25	80	58.52
1 1/4"	32	60	78.87
1 1/2"	40	40	96.25
2"	50	35	143.22



Reducer Elbow

Size (in)	mm	Qty	MRP
3/4" x 1/2"	20 x 15	150	22.92
1/2" x 3/4"	25 x 20	100	39.00
1" x 1/2"	25 x 15	100	37.20



Coupler

Size (in)	mm	Qty	MRP
1/2"	15	250	10.78
3/4"	20	150	16.50
1"	25	125	25.63
1 1/4"	32	60	38.72
1 1/2"	40	45	52.30
2"	50	40	81.51



Reducer TEE

Size (in)	mm	Qty	MRP
3/4" x 1/2"	20 x 15	100	29.92
1" x 3/4"	25 x 20	60	50.82
1" x 1/2"	25 x 15	60	50.60
1-1/4" x 1"	32 x 25	40	85.95
1-1/2" x 1"	40 x 25	30	103.10



Reducer Coupler

Size (in)	mm	Qty	MRP
3/4" x 1/2"	20 x 15	200	16.72
1" x 3/4"	25 x 20	125	25.85
1" x 1/2"	25 x 15	120	29.70
1 1/4" x 1"	32 x 25	75	37.80
1 1/2" x 1"	40 x 25	60	46.35





uPVC Smart Plumbing Pipes 3 Mtrs.

Size (in)	mm	MRP SCH40	Qty	MRP SCH80
1/2"	15	258.40	50	314.50
3/4"	20	311.10	35	413.10
1"	25	482.80	25	584.80
1 1/4"	32	681.70	15	843.20
1 1/2"	40	824.50	10	1021.70
2"	50	1050.60	8	1390.60

Reducer TEE Brass

Size (in)	mm	Qty	MRP
3/4" x 1/2"	20 x 15	100	160.00
1" x 1/2"	25 x 15	60	181.50
1 x 3/4"	25 x 20	60	211.50



TEE Brass

Size (in)	mm	Qty	MRP
1/2"	15	150	138.82
3/4"	20	75	189.50
1"	25	45	349.80



MTA Brass

Size (in)	mm	Qty	MRP
1/2"	15	200	149.50
1"	25	75	354.20



FTA Brass

Size (in)	mm	Qty	MRP
1/2"	15	250	102.41
1"	25	60	240.57



Shoe Bend 45°

Size (in)	mm	Qty	MRP
3/4"	20	160	26.00
1"	25	100	39.70



TP 2 Year Warranty

Size (in)	MTR	MRP
1/2"	30 MTR	1301
3/4"	30 MTR	1873
1"	30 MTR	2855
1 1/4"	30 MTR	4105



uPVC Smart Plumbing Pipes 6 Mtrs.

Size (in)	mm	MRP SCH40	Qty	MRP SCH80
1/2"	15	516.80	35	629.00
3/4"	20	620.50	25	826.20
1"	25	963.90	15	1171.30
1 1/4"	32	1363.40	12	1686.40
1 1/2"	40	1650.70	10	2045.10
2"	50	2097.80	6	2779.50

Reducer FTA Brass

Size (in)	mm	Qty	MRP
3/4" x 1/2"	20 x 15	240	134.81



Elbow Brass

Size (in)	mm	Qty	MRP
1/2"	15	150	101.20
3/4"	20	125	178.20
1"	25	75	275.11



Reducer Elbow Brass

Size (in)	mm	Qty	MRP
3/4" x 1/2"	20 x 15	125	135.52
1" x 1/2"	25 x 15	100	151.80
1 x 3/4"	25 x 20	80	189.50



Ball Valve

Size (in)	mm	Qty	MRP
1/2"	15	65	112.50
3/4"	20	35	154.00
1"	25	25	236.00
1 1/4"	32	15	362.00
1 1/2"	40	10	496.75
2"	50	05	771.50



Lotus Milky & TP

Size (in)	MTR	MRP
1/2"	30 MTR	1106
3/4"	30 MTR	1660
1"	30 MTR	2529
1 1/4"	30 MTR	3635

HDPE Sprinkler Pipe

Sr. No.	Size mm	2.5 kg	3.2 kg
1	63 mm "C" Clamp	437	511
2	63 mm "L" Clamp	425	500
3	75 mm "C" Clamp	603	654
4	75 mm "L" Clamp	590	640
5	90 mm "C" Clamp	788	984
6	90 mm "L" Clamp	770	970

Sprinkler Set

Items	Size (mm)	MRP
Sprinkler Pipe 3.2kg	63	569
	75	730
Adopter	63	317
	75	396
Bend	63	159
	75	241
Tee	63	229
	75	371
PCN C-Long Type	63	240
	75	244
PC End Cap	63	37
	75	52
Nozzle Gun Metal (ISI)	20	580
GI Riser Pipe (3/4")	20	185



Sprinkler Pipe Set L Accessories

Items	mm	Size	MRP
1	L Clamp	75 mm	37.57
2	Washer	75 mm	12.87
3	Converter (L to C)	75 mm	166.25

cPVC Adhesive



Size	Cab Box	Outer Box	MRP
59 ml	24 x 12	288	172
118 ml	24 x 6	144	251
237 ml	12 x 8	96	430
473 ml	12 x 4	48	770

PVC Adhesive



Size	Cab Box	Outer Box	MRP
100 ml	24 x 6	144	109
250 ml	24 x 4	96	199
500 ml	20 x 2	40	345
1000 ml	12 x 2	24	581

uPVC Adhesive



Size	Cab Box	Outer Box	MRP
59 ml	24 x 12	288	132
118 ml	24 x 6	144	196
237 ml	12 x 8	96	319
473 ml	12 x 4	48	560

Unbreakable Ghamela



Sr. No.	Size	Qty	MRP
1	TAGARI 15"	60	130
2	15"	60	135
3	16"	60	160
4	17"	60	185
5	18"	60	210
6	20"	40	266
7	22"	32	380

Unbreakable Plastic Bucket



Sr. No.	Ltrs.	Qty	MRP
1	5 Ltr.	60	108
2	10 Ltr.	50	196
3	13 Ltr.	50	240
4	16 Ltr.	40	290
5	19 Ltr.	40	372



HDPE SDR Pipes (PE-63)

Size (mm)	Pressure	SDR	MRP	Size (mm)	Pressure	SDR	MRP
25mm	8 kg	11	30.32	75mm	6 kg	13.6	215.22
32mm	6 kg	13.6	41.32	40mm ID	4 kg		63.31
40mm	4 kg	21	42.30	50mm ID	4 kg		86.92
50mm	4 kg	21	66.12	63mm ID	4 kg		138.70
50mm	6 kg		100.74	40mm ID	6 kg		109.79
63mm	4 kg	21	111.66	50mm ID	6 kg		180.58
63mm	6 kg		160.00	63mm ID	6 kg		293.03
75mm	4 kg	21	160.98				

HDPE SDR Pipes (PE-80)

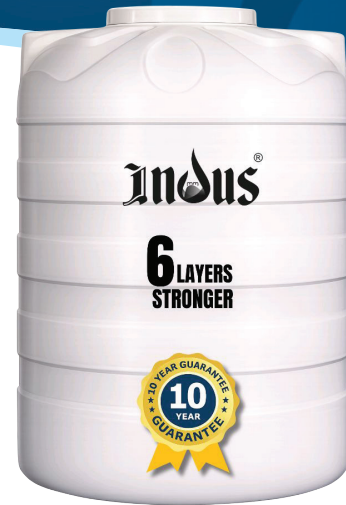
Size (mm)	Pressure	SDR	MRP	Size (mm)	Pressure	SDR	MRP
20mm	10 kg	9	24.95	63mm	8 kg	13.6	159.76
25mm	10 kg	11	31.41	63mm	10 kg		195.98
32mm	8 kg	13.6	42.43	75mm	6 kg	17	185.25
32mm	10 kg	11	49.88	75mm	8 kg	13.6	226.10
40mm	6 kg	17	53.61	75mm	10 kg		277.70
40mm	8 kg	13.6	64.60	90mm	6 kg	17	262.20
40mm	10 kg	11	78.85	90mm	8 kg		329.49
50mm	6 kg	17	83.22	90mm	10 kg		396.07
50mm	8 kg	13.6	100.38	110mm	6 kg	17	389.50
50mm	10 kg		122.42	110mm	8 kg		490.78
63mm	6 kg	17	128.25	110mm	10 kg		592.64

HDPE SDR Pipes (PE-100)

Size (mm)	Pressure	SDR	MRP	Size (mm)	Pressure	SDR	MRP	Size (mm)	Pressure	SDR	MRP
50mm	6 kg	17	70.30	110mm	6 kg	17	332.69	180mm	6 kg		885.30
50mm	8 kg	13.6	85.50	110mm	8 kg		416.96	180mm	8 kg		1078.35
50mm	10 kg		107.73	110mm	10 kg		502.74	180mm	10 kg		1384.50
50mm	12.5 kg		125.59	125mm	4 kg		283.10	200mm	4 kg		742.26
63mm	6 kg	17	110.20	125mm	6 kg		437.00	200mm	6 kg		1148.55
63mm	8 kg	13.6	133.00	125mm	8 kg		530.10	200mm	8 kg		1392.71
63mm	10 kg		171.57	125mm	10 kg		646.00	200mm	10 kg		1707.20
75mm	4 kg		102.60	140mm	4 kg		357.20	225mm	4 kg		947.36
75mm	6 kg	17	155.82	140mm	6 kg		537.70	225mm	6 kg		1453.27
75mm	8 kg	13.6	194.75	140mm	8 kg		665.00	225mm	8 kg		1761.89
75mm	10 kg		241.39	140mm	10 kg		813.20	225mm	10 kg		2168.18
90mm	4 kg		150.10	160mm	4 kg		465.50	250mm	4 kg		1162.22
90mm	6 kg	17	228.00	160mm	6 kg		718.20	250mm	6 kg		1791.19
90mm	8 kg		262.64	160mm	8 kg		874.00	250mm	8 kg		2168.18
90mm	10 kg		345.14	160mm	10 kg		1064.00	250mm	10 kg		2664.32
90mm	16 kg		527.50	160mm	12.5 kg		1292.00				
110mm	4 kg		222.30	180mm	4 kg		606.45				

Blow Moulding Tank (6 Layers)

Size	Height		Diameter	
300 Ltr.	35" Inch	889 mm	28" Inch	711 mm
500 Ltr.	41" Inch	1041 mm	33" Inch	838 mm
750 Ltr.	48" Inch	1219 mm	38" Inch	965 mm
1000 Ltr.	52" Inch	1320 mm	42" Inch	1067 mm
1500 Ltr.	58" Inch	1473 mm	48" Inch	1219 mm
2000 Ltr.	64" Inch	1625 mm	53" Inch	1346 mm



Roto Moulding Tank (3L, 4L,6L, 7L, 8L)

Size	Height		Diameter	
500 Ltr.	40" Inch	1016 mm	33" Inch	838 mm
750 Ltr.	43" Inch	1092 mm	38" Inch	965 mm
1000 Ltr.	48" Inch	1219 mm	41" Inch	1041 mm
1500 Ltr.	59" Inch	1499 mm	49" Inch	1245 mm
2000 Ltr.	63" Inch	1600 mm	54" Inch	1372 mm
3000 Ltr.	74" Inch	1880 mm	60" Inch	1524 mm
5000 Ltr.	81" Inch	2057 mm	71" Inch	1803 mm



I.S.I Tank (2 LAYER BLACK)

Size	Height		Diameter	
500 Ltr.	39" Inch	991 mm	36" Inch	914 mm
1000 Ltr.	50" Inch	1270 mm	44" Inch	1118 mm
5000 Ltr.	81" Inch	2057 mm	71" Inch	1803 mm



Blow Moulding Tank (12 Layers GOLD)

Size	Height		Diameter	
500 Ltr.	42" Inch	1067 mm	33" Inch	838 mm
750 Ltr.	47" Inch	1194 mm	38" Inch	965 mm
1000 Ltr.	51" Inch	1295 mm	42" Inch	1067 mm
1500 Ltr.	58" Inch	1473 mm	48" Inch	1219 mm
2000 Ltr.	64" Inch	1625 mm	53" Inch	1346 mm



Indus Tanks & Pipes

Plot No. C-5/C-3, MIDC Industrial Area Saoner,
Nagpur - 441 112 (MH)

M. 9284586177, 7620993341, 9075530537
www.industanks.com

Scan to Download
the Catalogue

